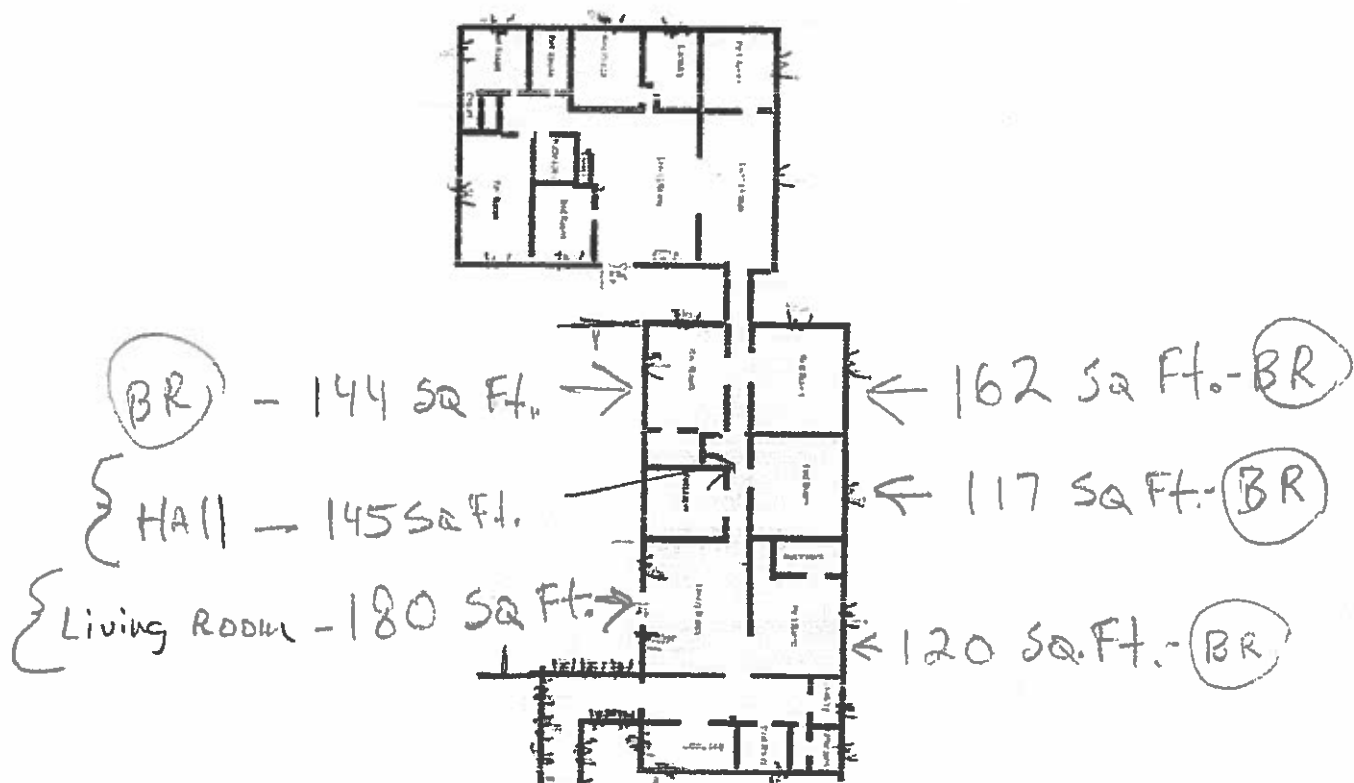


EMERGENCY ENVIRONMENTAL CONTROL PLAN
FOR
VARNUM'S REST HOME, LLC
LICENSE AL6026

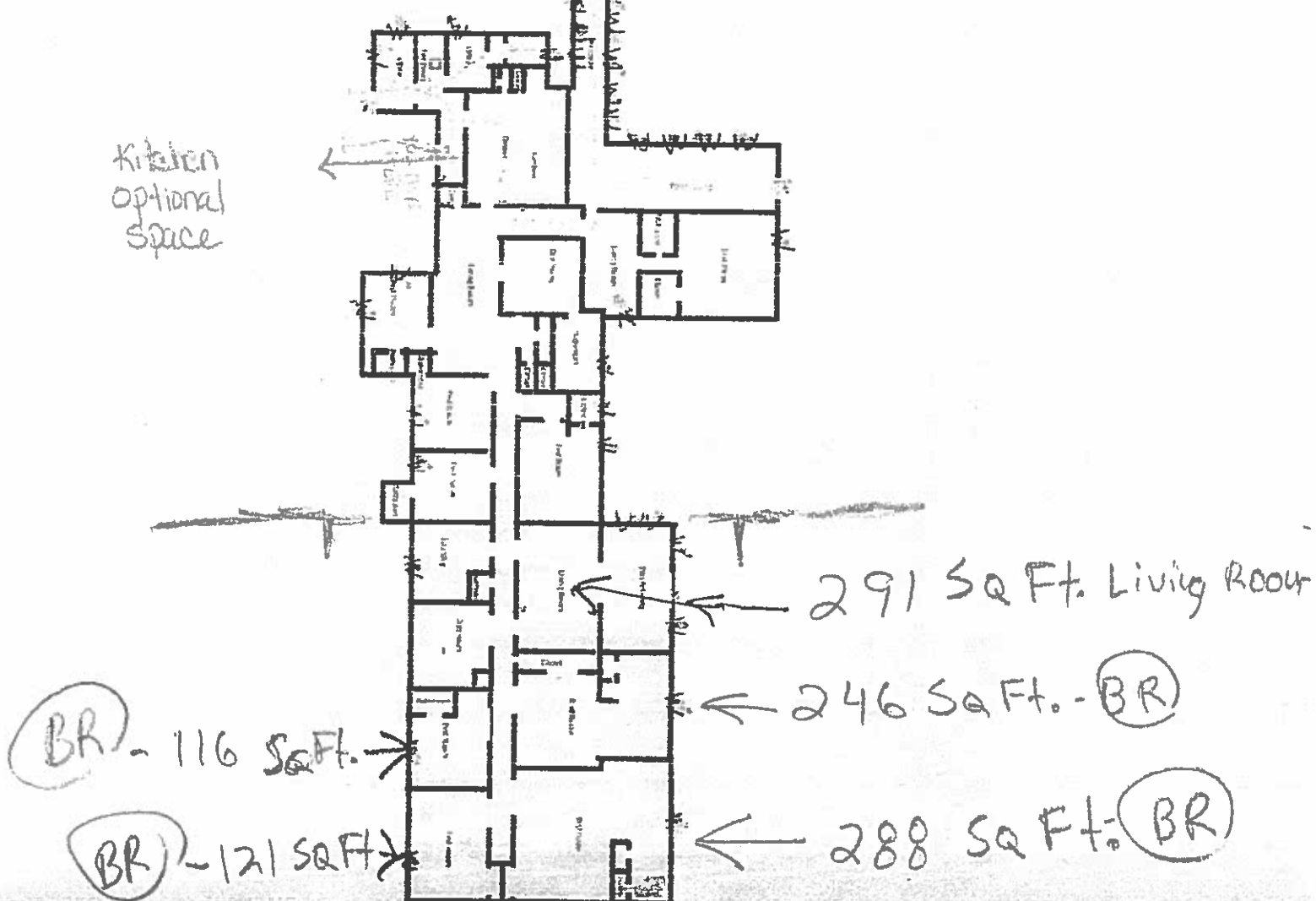
RULE 58A-5.036 Emergency Environmental Control Plan.

Each assisted living facility shall prepare a detailed plan to serve as a supplement to its Comprehensive Emergency Management Plan to address emergency environmental control in the Event of the loss of primary electrical power in that assisted living facility.

1. Varnum's Rest Home has three (3) Guardian by Generac Model 04390-1 generators that serve as sufficient power source to ensure ambient temperatures will be maintained at or below 81 degrees Fahrenheit for a minimum of ninety-six (96) hours in the event of a loss of primary electrical power. The generators are powered on by an automatic switch that powers the generators on as soon as the electrical power goes off. The generators are operated by lp gas supplied by Amerigas co. Varnum's Rest Home has two natural gas tanks which hold sufficient fuel to run the three generators for 96 hours. At all times there will be a minimum of 72 hours of fuel in the tanks. The tanks are checked monthly and refilled as needed. The three generators are on a documented automatic weekly test run schedule and a annual maintenance check by Joe Combs Electrical Co. LLC. See Attachment 1-A and 1-B.
2. The required temperature will be maintained in the areas designated. These areas are detailed in the attachment 1-C. showing a total of 1930 square feet for 45 residents. These areas have HVAC units that will be operational via the generators.
3. The care staff on duty shall monitor all residents for health and safety. Staff shall make rounds to check on all residents at least hourly and ensure all residents are staying comfortable. If a resident is deemed a health risk for any reason the staff shall immediately call 911 and request medical help or staff will transport the resident to the nearest health care facility.
4. The facility kitchen shall be partially operational for food service and at least one refrigerator shall be operational for storage of any medications requiring refrigeration. The dining area shall also be maintained at an ambient temperature of 81 degrees or below and will be used for food service and may be counted for added resident space if needed.
5. Carbon Monoxide alarms are placed in 6 areas of the building. The alarms are First Alert Battery Operated Carbon Monoxide Alarms. These alarms will be checked weekly and the batteries shall be changed biannually or as needed. The weekly and biannual checks shall be documented and kept on file.
6. These policies and procedures shall be available for inspection by each resident:, each resident's legal representative designee, surrogate, guardian, attorney in fact, or case manager. A copy of the policy and procedures shall be provided to each resident and resident legal representative and shall be documented in the resident file.



Kitchen optional space



Joe Combs Joe Combs, LLC 15647 NE New Market Road P.O. Box 155 Hosford, Florida 32334	License # EC13005630 Cell # 850-509-1096
--	---

To: Varnum Assisted Living Bristol, Fl JOB: Generator
--

I attest that the alternate power source of three Generac generators is sufficient to operate the equipment necessary to maintain an indoor temperature in accordance with the rule.

Joe Combs
4-19-18

**VARNUM'S REST HOME
WEEKLY GENERATOR TEST RUN LOG**

MONTH	GENERATOR 1 WEEKS	GENERATOR 2 WEEKS	GENERATOR 3 WEEKS
JANUARY	1 2 3 4 5	1 2 3 4 5	1 2 3 4 5
FEBRUARY	1 2 3 4 5	1 2 3 4 5	1 2 3 4 5
MARCH	1 2 3 4 5	1 2 3 4 5	1 2 3 4 5
APRIL	1 2 3 4 5	1 2 3 4 5	1 2 3 4 5
MAY	1 2 3 4 5	1 2 3 4 5	1 2 3 4 5
JUNE	1 2 3 4 5	1 2 3 4 5	1 2 3 4 5
JULY	1 2 3 4 5	1 2 3 4 5	1 2 3 4 5
AUGUST	1 2 3 4 5	1 2 3 4 5	1 2 3 4 5
SEPTEMBER	1 2 3 4 5	1 2 3 4 5	1 2 3 4 5
OCTOBER	1 2 3 4 5	1 2 3 4 5	1 2 3 4 5
NOVEMBER	1 2 3 4 5	1 2 3 4 5	1 2 3 4 5
DECEMBER	1 2 3 4 5	1 2 3 4 5	1 2 3 4 5

THE GENERAC GENERATORS ARE ON A AUTOMATIC SWITCH TO POWER ON AS SOON AS THE ELECTRICITY GOES OFF.
THE GENERATORS AUTOMATICALLY POWER ON FOR A WEEKLY TEST RUN. WE WILL DOCUMENT THAT THE WEEKLY TEST RUNS ARE SUCCESSFUL.

VARNUM'S REST HOME CARBON MONOXIDE ALARM TEST LOG

SIX (6) FIRST ALERT CARBON MONOXIDE ALARMS ARE INSTALLED AROUND THE BUILDING.

THESE ALARMS SHALL BE TESTED WEEKLY AND DOCUMENTED .

THE BATTERIES IN ALL THE ALARMS SHALL BE CHANGED BIANNUALLY AND DOCUMENTED. ANY ISSUES WILL BE DOCUMENTED IN THE COMMENTS SECTION

MOHTH	WEEK 1	WEEK 2	WEEK 3	WEEK 4	WEEK 5
JANUARY	1 2 3 4 5 6	1 2 3 4 5 6	1 2 3 4 5 6	1 2 3 4 5 6	1 2 3 4 5 6
FEBRUARY	1 2 3 4 5 6	1 2 3 4 5 6	1 2 3 4 5 6	1 2 3 4 5 6	1 2 3 4 5 6
MARCH	1 2 3 4 5 6	1 2 3 4 5 6	1 2 3 4 5 6	1 2 3 4 5 6	1 2 3 4 5 6
APRIL	1 2 3 4 5 6	1 2 3 4 5 6	1 2 3 4 5 6	1 2 3 4 5 6	1 2 3 4 5 6
MAY	1 2 3 4 5 6	1 2 3 4 5 6	1 2 3 4 5 6	1 2 3 4 5 6	1 2 3 4 5 6
JUNE	1 2 3 4 5 6	1 2 3 4 5 6	1 2 3 4 5 6	1 2 3 4 5 6	1 2 3 4 5 6
JULY	1 2 3 4 5 6	1 2 3 4 5 6	1 2 3 4 5 6	1 2 3 4 5 6	1 2 3 4 5 6
AUGUST	1 2 3 4 5 6	1 2 3 4 5 6	1 2 3 4 5 6	1 2 3 4 5 6	1 2 3 4 5 6
SEPTEMBER	1 2 3 4 5 6	1 2 3 4 5 6	1 2 3 4 5 6	1 2 3 4 5 6	1 2 3 4 5 6
OCTOBER	1 2 3 4 5 6	1 2 3 4 5 6	1 2 3 4 5 6	1 2 3 4 5 6	1 2 3 4 5 6
NOVEMBER	1 2 3 4 5 6	1 2 3 4 5 6	1 2 3 4 5 6	1 2 3 4 5 6	1 2 3 4 5 6
DECEMBER	1 2 3 4 5 6	1 2 3 4 5 6	1 2 3 4 5 6	1 2 3 4 5 6	1 2 3 4 5 6

VARNUM'S REST HOME

LP GAS TANK LOG

The LP tanks shall maintain enough fuel to run the generators for a minimum of 72 hours and shall check the percentage of fuel each month to assure minimum is maintained. If the level of gas is below the minimum we shall call Amerigas to increase the level.

In the event of an emergency we shall call Amerigas to deliver enough fuel to maintain the generators for 96 hours.

MONTH	TANK 500	TANK 250	FILLED
JANUARY			
FEBRUARY			
MARCH			
APRIL			
MAY			
JUNE			
JULY			
AUGUST			
SEPTEMBER			
OCTOBER			
NOVEMBER			
DECEMBER			

COMMENTS:

**ASSISTED LIVING FACILITY
EMERGENCY ENVIRONMENTAL CONTROL PLAN
RULE 58A-5.036, FLORIDA ADMINISTRATIVE CODE (F.A.C.)
AHCA Sample Format for Plan Submission**

The AHCA sample format is designed as a tool for facilities to use as they develop their Emergency Power Plan to meet the provisions of the rule. Local Emergency Management Agencies may have specific checklists to assess the plans and assist with plan development and review, which should be used before this format is considered. Please visit <https://www.floridadisaster.org/counties/> to contact your local county emergency management agency to determine whether a specific local checklist is available.

1. Facility Information:

Facility Name: VARNUM'S REST HOME

Street Address: 12167 NW FREEMAN ROAD

City, County, Zip: BRISTOL, FL 32321

Administrator Name: RUBY L VARNUM

Contact Number(s): 850-643-5155

License Number: AL6029 Number of Licensed Beds: 45

- Is the facility: Located on a campus with other facilities under common ownership
 Located in a multistory building
 Stand-alone single story building
 Located in a mandatory evacuation zone (If so, provide details below).

Details:

2. Alternate Power Source:

Description of onsite alternate power source:

- Portable generator Fixed generator Other: _____

Provide: Make: GENERAC GUARDIAN Model: 04390-1 Size:
 Make: GENERAC GUARDIAN Model: 04390-1 Size:
 Make: GENERAC GUARDIAN Model: 04390-1 Size:

The alternate power source is capable of powering the following equipment:

- Entire Facility Lights Refrigeration Life Safety Systems
 Air Conditioning Heating Systems Other _____

Provide the date implementation of the alternate power source will be complete:

Date Complete: previously installed in 2009

3. Fuel Information:

Type of Fuel: Diesel Propane Piped Gas Gasoline

Hours of runtime with onsite fuel: 72-96 hours

Fuel Distributor: AMERIGAS

Are there local restrictions on the amount of fuel stored onsite? Yes No

If yes, list regulation and limitation:

Describe how your fuel will be stored onsite? TWO LP TANKS CONNECTED TO THE THREE GENERATORS

Describe how your facility will refuel before, during, and after an emergency.

tanks maintained with min of 72 hours fuel. In the event of anticipated emergency will contact Amerigas to fill tanks completely for 96+ hours of fuel. If more needed during emergency will Contact Amerigas to refuel. After emergency tanks will be maintained at 72-96 hours again.

4. Cooling Method:

What kind of equipment will be used to cool the facility?

- Air Conditioner(s) Spot Cooler(s) Chiller Fan(s)
 Other: _____

5. Cooled Area:

What area(s) of the facility do you plan to keep at or below 81 degrees?

- Entire Facility Living Room Dining Room Resident Room(s)
 Common Area(s) Hallways Other Area(s)

Two designated areas of the building which includes living rooms, bedrooms, hallway and bathrooms. Dining room will also be available for meals and as needed. See attached floor plan

What is the net square footage of the area to be cooled? 1930 square feet

How many people (residents and staff) do you plan to locate in this cooled space/area? (Please keep in mind the required square footage requirements per person for your facility type.) 48

Will there be beds available in the cooled area? Yes No

If yes, are these beds currently onsite? Yes No

Describe how you will ensure the facility does not exceed the required temperature and how the facility and residents will be monitored.

the HVAC units will be operational in the areas via the generators. each HVAC unit has a temperature displayed on the thermostat. The temperature shall be monitored and the staff shall monitor the residents by checking on them at least hour

6. Policies and Procedures

Provide a training procedure to ensure staff are aware of how to operate the emergency power to the facility. Describe:

Staff shall be trained upon hire and annually of the emergency policy. They will be trained that the generators will engage automatically when there is a power failure and to ensure that all three generators are powered on. They will also be trained on the procedure to manually engage generators if needed.

Provide a maintenance and testing schedule for both the alternate power source and cooling system. Describe:

Maintenance and testing logs are maintained by the facility and testing is done weekly by automatic testing of the generators and the testing is logged. Annual maintenance is performed and also logged.

7. Carbon Monoxide Alarm

Where is the carbon monoxide alarm(s) located in the facility? there are six (6) alarms located in different areas of the building

What is the maintenance schedule for the carbon monoxide alarm(s)? the alarms are tested weekly and logged and the batteries are changed biannually and logged

8. Supporting Documentation

Submit the following documentation with the plan:

- Facility floor plan. Area(s) intended to be used as the "cooled area" identified in Section 5 should be outlined/highlighted on the facility floor plan.
- Letter attesting that the alternate power source is sufficient to operate the equipment necessary to maintain an indoor temperature in accordance with the rule. (May be provided by a professional electrical engineer or a licensed electrical contractor).
- If residents will be relocated to an area(s) of refuge, a letter attesting that the HVAC equipment serving the area is sufficient to maintain an indoor temperature, in accordance with the rule, for the number of residents served in the area(s). (May be provided by a professional mechanical engineer or a licensed mechanical contractor).
- Fuel agreement

AmeriGas - 7273
 4125 Lafayette Street
 Marianna FL 32446-5651
 850-482-3311
 www.amerigas.com

Invoice



ACCOUNT NUMBER: 201563844
 INVOICE AMT DUE: \$77.76
 DUE DATE: 03/02/2018

INVOICE NO: 3074517076

INVOICE DATE: 01/31/2018

NAME: VARNUMS A L F
 SERVICE ADDRESS: FREEMAN RD
 BRISTOL FL 32321

Previous Balance	Payments	Adjustments/Credits	New Charges	Account Balance Due	Invoice Amount Due
\$269.41	-\$269.41	\$0.00	\$77.76	\$77.76	\$77.76

Account Activity

Date	Ref No.	Description	Quantity	Price	Amount
01/31/18	627526949	Tank Rent-Fixed-250 GALLON TANK 01/01/2018 - 12/31/2018 SITE:101706487	12.0		\$82.00
		Equipment Rent Disc			-\$10.00
		State Sales Tax			\$4.32
		County Sales Tax			\$1.44
		TOTAL NEW CHARGES			\$77.76

Account Balance Due includes all outstanding charges for which we have not received payment and may not reflect payments sent.

*pd
 ch# 6180
 2-6-18*

MESSAGES

Your safety is our priority! For helpful tips for a worry-free winter, visit the Propane/Consumer Safety section of our company website.

We periodically review and revise our standard Terms & Conditions. Visit our company website to read the T&C that apply. Tired of calling for propane? Enroll in automatic delivery and get our no run-out promise. Call your local office for details.

Contact Us: Billing, Service & Delivery: 850-482-3311
 Pay Online or Enroll in our Automatic Payment program: www.amerigas.com

**EMERGENCY ENVIRONMENTAL CONTROL PLAN
FOR
VARNUM'S REST HOME, LLC**

This plan is submitted and approved on this _____ day of _____ 2018.

Ruby he Varnum Date 4-27-18
Ruby Varnum
Owner/Administrator
Varnum's Rest Home LLC

Rhonda Lewis Date 04-27-18
Rhonda Lewis
Liberty County Emergency Management Director

Posted to Liberty County Emergency Management website on

Date

Submitted to AHCA on

Date

58A-5.036 Emergency Environmental Control for Assisted Living Facilities.

(1) **DETAILED EMERGENCY ENVIRONMENTAL CONTROL PLAN.** Each assisted living facility shall prepare a detailed plan ("plan") to serve as a supplement to its Comprehensive Emergency Management Plan, to address emergency environmental control in the event of the loss of primary electrical power in that assisted living facility which includes the following information:

(a) The acquisition of a sufficient alternate power source such as a generator(s), maintained at the assisted living facility, to ensure that current licensees of assisted living facilities will be equipped to ensure ambient air temperatures will be maintained at or below 81 degrees Fahrenheit for a minimum of ninety-six (96) hours in the event of the loss of primary electrical power.

1. The required temperature must be maintained in an area or areas, determined by the assisted living facility, of sufficient size to maintain residents safely at all times and that is appropriate for resident care needs and life safety requirements. For planning purposes, no less than twenty (20) net square feet per resident must be provided. The assisted living facility may use eighty percent (80%) of its licensed bed capacity as the number of residents to be used in the calculation to determine the required square footage. This may include areas that are less than the entire assisted living facility if the assisted living facility's comprehensive emergency management plan includes allowing a resident to congregate when he or she desires in portions of the building where temperatures will be maintained and includes procedures for monitoring residents for signs of heat related injury as required by this rule. This rule does not prohibit a facility from acting as a receiving provider for evacuees when the conditions stated in Section 408.821, F.S., and subsection 58A-5.026(5), F.A.C., are met. The plan shall include information regarding the area(s) within the assisted living facility where the required temperature will be maintained.

2. The alternate power source and fuel supply shall be located in an area(s) in accordance with local zoning and the Florida Building Code.

3. Each assisted living facility is unique in size; the types of care provided; the physical and mental capabilities and needs of residents; the type, frequency, and amount of services and care offered; and staffing characteristics. Accordingly, this rule does not limit the types of systems or equipment that may be used to achieve ambient temperatures at or below 81 degrees Fahrenheit for a minimum of ninety-six (96) hours in the event of the loss of primary electrical power. The plan shall include information regarding the systems and equipment that will be used by the assisted living facility and the fuel required to operate the systems and equipment.

a. An assisted living facility in an evacuation zone pursuant to Chapter 252, F.S., must maintain an alternative power source and fuel as required by this subsection at all times when the assisted living facility is occupied but is permitted to utilize a mobile generator(s) to enable portability if evacuation is necessary.

b. Assisted living facilities located on a single campus with other facilities under common ownership, may share fuel, alternative power resources, and resident space available on the campus if such resources are sufficient to support the requirements of each facility's residents, as specified in this rule. Details regarding how resources will be shared and any necessary movement of residents must be clearly described in the emergency power plan.

c. A multi-story facility, whose comprehensive emergency management plan is to move residents to a higher floor during a flood or surge event, must place its alternative power source and all necessary additional equipment so it can safely operate in a location protected from flooding or storm surge damage.

(b) The acquisition of sufficient fuel, and safe maintenance of that fuel at the facility, to ensure that in the event of the loss of primary electrical power there is sufficient fuel available for the alternate power source to maintain ambient temperatures at or below 81 degrees Fahrenheit for a minimum of ninety-six (96) hours after the loss of primary electrical power during a declared state of emergency. The plan must include information regarding fuel source and fuel storage.

1. Facilities must store minimum amounts of fuel onsite as follows:

a. A facility with a licensed capacity of 16 beds or less must store 48 hours of fuel onsite.

b. A facility with a licensed capacity of 17 or more beds must store 72 hours of fuel onsite.

2. An assisted living facility located in an area in a declared state of emergency area pursuant to Section 252.36, F.S., that may impact primary power delivery must secure ninety-six (96) hours of fuel. The assisted living facility may utilize portable fuel storage containers for the remaining fuel necessary for ninety-six (96) hours during the period of a declared state of emergency.

3. Piped natural gas is an allowable fuel source and meets the onsite fuel supply requirements under this rule.

4. If local ordinances or other regulations limit the amount of onsite fuel storage for the assisted living facility's location, then the assisted living facility must develop a plan that includes maximum onsite fuel storage allowable by the ordinance or regulation and a reliable method to obtain the maximum additional fuel at least 24 hours prior to depletion of onsite fuel.

(c) The acquisition of services necessary to maintain, and test the equipment and its functions to ensure the safe and sufficient operation of the alternate power source maintained at the assisted living facility.

(d) The acquisition and maintenance of a carbon monoxide alarm.

(2) SUBMISSION OF THE PLAN.

(a) Each assisted living facility licensed prior to the effective date of this rule shall submit its plan to the local emergency management agency for review within 30 days of the effective date of this rule. Assisted living facility plans previously submitted and approved pursuant to Emergency Rule 58AER17-1, F.A.C., will require resubmission only if changes are made to the plan.

(b) Each new assisted living facility shall submit the plan required under this rule prior to obtaining a license.

(c) Each existing assisted living facility that undergoes any additions, modifications, alterations, refurbishment, renovations or reconstruction that require modification of its systems or equipment affecting the facility's compliance with this rule shall amend its plan and submit it to the local emergency management agency for review and approval.

(3) APPROVED PLANS.

(a) Each assisted living facility must maintain a copy of its approved plan in a manner that makes the plan readily available at the licensee's physical address for review by a legally authorized entity. If the plan is maintained in an electronic format, assisted living facility staff must be readily available to access and produce the plan. For purposes of this section, "readily available" means the ability to immediately produce the plan, either in electronic or paper format, upon request.

(b) Within two (2) business days of the approval of the plan from the local emergency management agency, the assisted living facility shall submit in writing proof of the approval to the Agency for Health Care Administration.

(c) The assisted living facility shall submit a consumer-friendly summary of the emergency power plan to the Agency. The Agency shall post the summary and notice of the approval and implementation of the assisted living facility emergency power plans on its website within ten (10) business days of the plan's approval by the local emergency management agency and update within ten (10) business days of implementation.

(4) IMPLEMENTATION OF THE PLAN.

(a) Each assisted living facility licensed prior to the effective date of this rule shall, no later than June 1, 2018, have implemented the plan required under this rule.

(b) The Agency shall allow an extension up to January 1, 2019 to providers in compliance with subsection (c), below, and who can show delays caused by necessary construction, delivery of ordered equipment, zoning or other regulatory approval processes. Assisted living facilities shall notify the Agency that they will utilize the extension and keep the Agency apprised of progress on a quarterly basis to ensure there are no unnecessary delays. If an assisted living facility can show in its quarterly progress reports that unavoidable delays caused by necessary construction, delivery of ordered equipment, zoning or other regulatory approval processes will occur beyond the initial extension date, the assisted living facility may request a waiver pursuant to Section 120.542, F.S.

(c) During the extension period, an assisted living facility must make arrangements pending full implementation of its plan that provides the residents with an area or areas to congregate that meets the safe indoor air temperature requirements of paragraph (1)(a), for a minimum of ninety-six (96) hours.

1. An assisted living facility not located in an evacuation zone must either have an alternative power source onsite or have a contract in place for delivery of an alternative power source and fuel when requested. Within twenty-four (24) hours of the issuance of a state of emergency for an event that may impact primary power delivery for the area of the assisted living facility, it must have the alternative power source and no less than ninety-six (96) hours of fuel stored onsite.

2. An assisted living facility located in an evacuation zone pursuant to Chapter 252, F.S., must either:

a. Fully and safely evacuate its residents prior to the arrival of the event, or
b. Have an alternative power source and no less than ninety-six (96) hours of fuel stored onsite, within twenty-four (24) hours of the issuance of a state of emergency for the area of the assisted living facility.

(d) Each new assisted living facility shall implement the plan required under this rule prior to obtaining a license.

(e) Existing assisted living facilities that undergo any additions, modifications, alterations, refurbishment, renovations or reconstruction that require modification of the systems or equipment affecting the assisted living facility's compliance with this rule shall implement its amended plan concurrent with any such additions, modifications, alterations, refurbishment, renovations or reconstruction.

(f) The Agency for Health Care Administration may request cooperation from the State Fire Marshal to conduct inspections to ensure implementation of the plan in compliance with this rule.

(5) POLICIES AND PROCEDURES.

(a) Each assisted living facility shall develop and implement written policies and procedures to ensure that the assisted living facility can effectively and immediately activate, operate and maintain the alternate power source and any fuel required for the operation of the alternate power source. The procedures shall ensure that residents do not experience complications from fluctuations in ambient air temperatures inside the facility. Procedures must address the care of residents occupying the facility during a declared state of emergency, specifically, a description of the methods to be used to mitigate the potential for heat related injury including:

1. The use of cooling devices and equipment;
2. The use of refrigeration and freezers to produce ice and appropriate temperatures for the maintenance of medicines requiring refrigeration;
3. Wellness checks by assisted living facility staff to monitor for signs of dehydration and heat injury; and,
4. A provision for obtaining medical intervention from emergency services for residents whose life safety is in jeopardy.

(b) Each assisted living facility shall maintain the written policies and procedures in a manner that makes them readily available at the licensee's physical address for review by a legally authorized entity. If the policies and procedures are maintained in an electronic format, assisted living facility staff must be readily available to access the policies and procedures and produce the requested information. For purposes of this section, "readily available" means the ability to immediately produce the policies and procedures, either in electronic or paper format, upon request.

(c) The written policies and procedures must be readily available for inspection by each resident; each resident's legal representative, designee, surrogate, guardian, attorney in fact, or case manager; each resident's estate; and such additional parties as authorized in writing or by law.

(6) **REVOCATION OF LICENSE, FINES OR SANCTIONS.** For a violation of any part of this rule, the Agency for Health Care Administration may seek any remedy authorized by Chapter 429, Part I, F.S., or Chapter 408, Part II, F.S., including, but not limited to, license revocation, license suspension, and the imposition of administrative fines.

(7) COMPREHENSIVE EMERGENCY MANAGEMENT PLAN.

(a) Assisted living facilities whose comprehensive emergency management plan is to evacuate must comply with this rule.

(b) Each facility whose plan has been approved shall submit the plan as an addendum with any future submissions for approval of its comprehensive emergency management plan.

(8) NOTIFICATION.

(a) Within five (5) business days, each assisted living facility must notify in writing, unless permission for electronic communication has been granted, each resident and the resident's legal representative:

1. Upon submission of the plan to the local emergency management agency that the plan has been submitted for review and approval;
2. Upon final implementation of the plan by the assisted living facility.

(b) Each assisted living facility must maintain a copy of each notification set forth in paragraph (a), above, in a manner that makes each notification readily available at the licensee's physical address for review by a legally authorized entity. If the notifications are maintained in an electronic format, facility staff must be readily available to access and produce the notifications. For purposes of this section, "readily available" means the ability to immediately produce the notifications, either in electronic or paper format, upon request.